



# Mobility Pause



*New Board member, John Peebles and 'Eva'.*

July has been a watershed month in the evolution of Mobility Dogs. When the Puppies in Prison Partnership was launched by the Rt Hon Phil Goff, Minister of Corrections and the department CEO, Barry Mathews, their knowledge of Mobility Dogs and commitment to the future indicates the progress this relatively new organisation is making within New Zealand. Thanks to all involved for your passion and support in advancing the organisation.

Puppy love is contagious! Right now within the Mobility Dog Community our newest 'E' puppies - 'Echo', 'Ellie' and 'Eva' are claiming hearts in Palmerston North, prison and the suburbs of Auckland. We have welcomed John Peebles as an additional Board member and along with his acute business acumen he brings a life-long enchantment with retrievers. It wasn't difficult to capture a photo of John with 'Eva the Retriever'.

Here's to dog ability - and those who develop it!

Margaret A Zubcic  
Chairperson



CEO Bradley Mark is delighted to announce that Mobility Dogs has been appointed to run the first ever 'Puppies in Prisons' (PIP) pilot programme in partnership with the New Zealand Department of Corrections. The programme was officially launched at the Auckland Women's Correctional Facility on 17 July 2008.

In 2007 Bradley was awarded a Winston Churchill Fellowship which enabled him to travel to the United Kingdom and the United States visiting both assistance dog training facilities and several prisons with established puppy training programmes. Bradley has now further developed this concept to enable a similar project to be implemented in New Zealand prisons.

Mobility Dogs has placed the first two puppies in prison to be raised by selected women prisoners. Mobility Dogs staff will carry out a well defined experiential training programme whereby the prisoner handlers will be guided in aspects of animal learning, behaviour, motivation, and development. The inmate handlers are being offered the opportunity to learn new skills, be an integral part of a meaningful relationship and also to contribute to the wider community.

The Puppies Inside project content is drawn from both Mobility Dogs current programme and components similar to those currently operating in the UK and USA (refer "Cell Dogs" and "Puppies behind Bars"). Commitment, self discipline, study, reporting, teamwork, leadership (and outstanding puppies ready for advanced training!) are all elements and outcomes of the proposed project.

Volunteer puppy parole parents will ensure the all round socialisation of the puppies as they spend each weekend exploring in the community.

Mobility Dogs welcomes the opportunity to introduce this significant initiative into New Zealand. We are confident that the programme will go a long way to providing more highly trained assistance dogs to meet the growing demand from our physically disabled community.

The success of this 'Puppies in Prison' initiative is reliant on your support. Please feel free to contact Mobility Dogs for further information, make a donation via our website or drop in to any Westpac Bank with your donation for Puppies in Prison.

# Going for Gold with Golden Retrievers



*Black Sticks James Nation and Jaimee Claxton with mobility dogs 'Dougal' and 'Chance'.*

himself as, "competitive, focused and determined". James works for ACC. His advice to young players is to, "enjoy".

"As an Ambassador for Mobility Dogs I feel extremely fortunate to be able to support and promote this great cause. To see the difference that a mobility dog can make to their recipients day to day activities by furthering their independence shows the importance that Mobility Dogs have in an individual's life. I am honoured to be a part of the Mobility Dogs' programme and look forward to helping assist this fantastic service in the future."

Jaimee describes herself as, "an all round nice girl" and is currently a post graduate student of nutrition. She advises young players, "to use every practice as an opportunity to become a better player and enjoy the challenge of hard work and sacrifice".

"It was an absolute honour and privilege to be asked to become an Ambassador for Mobility Dogs. Having always been brought up with dogs as family pets, I fully appreciate the old saying that dogs are man's best friend. Nowhere will you find such a loyal, intelligent and loving companion that can so easily become part of the family.

Mobility dogs are making a remarkable impact on many lives throughout New Zealand and changing the way that people are able to enjoy life, so it only made sense for me to support an organisation working so hard in the community to make the 'simple things in life' a little easier."

A sponsored Mobility Dogs golf team supported the Hockey NZ Olympic Fundraising Day at Pupuke Golf Course on 22 May. Mobility Dogs will be 'Barking for the Black Sticks' in Beijing! (news of Olympic hockey results can be followed at [www.hockeynz.co.nz](http://www.hockeynz.co.nz))

**M**obility Dogs is delighted to welcome and introduce our first two Ambassadors.

James Nation and Jaimee Claxton are members of the national Black Sticks hockey teams at the Olympic Games in Beijing.

Both James and Jaimee made their

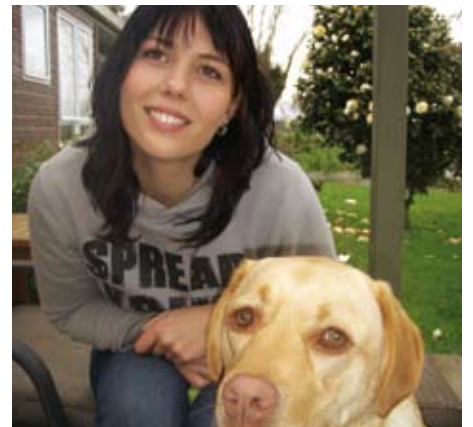
Black Sticks debut in 2001 and were also members of the Athens Olympic hockey teams in 2004. As at January 2008 James had 80 caps and Jaimee 134. They play at opposite ends of the hockey turf; James is a defender and Jaimee a striker.

On his Hockey NZ profile James describes

## Meet Temporary Office Administrator - Sally Burley

I have just joined Mobility Dogs as the temporary Office Administrator and I am delighted to be working with everyone here and to be working in such a worthy organisation. I have recently finished my Bachelor of Science in biological sciences and psychology, with a major in animal behaviour, from the University of Waikato.

I thoroughly enjoyed my degree and I am very excited to now be on my next adventure in administration and using my animal behaviour knowledge to assist Mobility Dogs. I am originally from Tauranga and have relocated to Auckland, although I will still be very much in between houses for the short term. I have a great long term vision for Mobility Dogs and can't wait to watch it grow to become nationwide. Please feel free to contact me at the office [info@mobilitydogs.co.nz](mailto:info@mobilitydogs.co.nz) or (09) 4485520



# Fourth Initial Weekend a Great Success



Three applicants successfully completed an orientation weekend at Wairau Valley Special School, Glenfield, 23-25 May 2008.

An Initial Weekend is designed so that everyone has the opportunity to learn how to care for a dog, use commands and determine their social styles. Bradley's workshops demonstrated that a successful Mobility Dog working team matches canine and human social styles as closely as possible.



Saturday night saw the Mobility Dogs team and applicants dining at 'Khun Pun Thai' in Albany; together with four dogs quietly absorbing the wafting odours of fragrant spices and seasonings under the table.

The Sunday programme featured a 60th Birthday Brunch for one of our applicants. Working teams - Amy and 'Bonnie' and Barry and 'Bentley' - joined us to share their experiences of life with a mobility dog since graduating in January. Our Hockey NZ Black Sticks Ambassador, James, also visited.

Mobility Dogs wishes to acknowledge the ongoing support of Initial Weekend breakfast sponsors, Sanitarium.

It is always inspirational to meet our new applicants; of course we very much wish we could provide a fully trained assistance dog to work with you, and others patiently waiting, tomorrow.

## SNOW DOGS



'Emmit' almost camouflaged in the chill of an Arrowtown winter!



'Audi' and Gail at Mt Hutt.

## Hot New Puppy Sponsor

In addition to our two puppies in prison we also welcome 'Echo' to our Canine Development Programme. 'Echo' is brother to golden retriever 'Eva'. He is sponsored by specialist software distributor, Chillisoft.

'Echo' is being puppy-raised in the Manawatu by David Guest of Enable who organises the annual 'Show Your Ability' national roadshow of disability products and services. No doubt some of you will meet 'Echo' at this event next year.

Irresistible 'Echo'. 



## Introducing Grants Coordinator - Jody Hogan



I have recently joined the team at Mobility Dogs as the Grants and Funds Coordinator. Whilst this is my primary role, we are a small organisation so I wear many hats!

I have a long held interest in disability issues and I have framed my academic work (biological/social anthropology and Social Science for Public Health) to explore many aspects of disability. It seems like a natural extension to be working for Mobility Dogs - bringing together both my interest in disability on a theoretical level and now, working with people whose reality is the lived experience of disability. My daughter Amy has been recently matched with her service dog 'Bonnie'. After experiencing first hand the difference 'Bonnie' has made to Amy's life, my passion

now is to ensure we get more dogs out there to those that need them.

The Puppies in Prisons (PIP) programme is another aspect of Mobility Dogs that I find particularly interesting and challenging. We now have the opportunity to get more dogs out into the community and at the same time introduce a wider social initiative offering the prisoners an opportunity to serve that very community.

I understand that it is a major long term commitment to be considering being matched with a mobility dog. I am more than happy to share my own experiences with you or discuss any queries/questions you may have. Please contact me on [jhogan@mobilitydogs.co.nz](mailto:jhogan@mobilitydogs.co.nz) or (021) 02390619. I look forward to hearing from you.

# Harp of Erin Lions Club Street Appeal Raises Valuable Funds

Following a presentation by Helen and 'Chance' to the Harp of Erin Lions Club in April, Club members offered to assist with a street appeal at Greenlane Foodtown, 10am-2pm on two days in July.

Together with a number of mobility dogs and supporters, a total of \$2076.30 was collected. Many thanks to all who participated in this combined community fundraising activity. The dogs were most impressed by Lion Chris' packets of treats!



Harp of Erins Lions Club President Sarolta Bernhardt collecting with Leonie and 'Cassie'.



**NOTECARDS FOR SALE**

Support Mobility Dogs and purchase packs of 10 Mobility Dog blank notecards and envelopes (five cards of each of two designs per pack) \$20

To order please contact  
(09) 448 5520 or  
info@mobilitydogs.co.nz

**Brilliant Shine TV doco on our website**

Take a few moments to watch the excellent Shine TV documentary recently linked to [www.mobilitydogs.co.nz](http://www.mobilitydogs.co.nz)

Thanks to Webwidgets for a recent donation towards our monthly hosting fee. Mobility Dogs looks forward to further donations via the online donation facility!

**SINCERE THANKS** to all who have made donations to Mobility Dogs since our last newsletter. We appreciate some of you wish to remain anonymous. In particular we wish to acknowledge a full puppy sponsorship from the Joyce Fisher Charitable Trust, further sponsorship from the Rotary Club of Ellerslie Sunrise, grants from the ASB Community Trust, Lion Foundation, SkyCity Community Trust, Jubilee Trust and CLANZ and a donation from Gillian Peebles.

**DONATIONS to the Mobility Assistance Dogs Trust may be made directly online [www.mobilitydogs.co.nz](http://www.mobilitydogs.co.nz) and at any Westpac branch.**

## Make a Difference Donate to Mobility Dogs

The Mobility Assistance Dogs Trust relies solely on voluntary contributions to do its work. If you would like to support Mobility Dogs, please complete and return the form below or visit our website [www.mobilitydogs.co.nz](http://www.mobilitydogs.co.nz)

Donations \$5 and over are eligible for tax deductions. Thank you.



Lion Foundation House. 3 William Laurie Place. Albany. Auckland  
PO Box 300 563. Albany 0752. Auckland. New Zealand  
P +64 9 448 5520 or 0800 662 364  
E [info@mobilitydogs.co.nz](mailto:info@mobilitydogs.co.nz) [www.mobilitydogs.co.nz](http://www.mobilitydogs.co.nz)

Name \_\_\_\_\_

Address \_\_\_\_\_

Phone \_\_\_\_\_ Email \_\_\_\_\_

I would like to make a donation to continue the work of Mobility Dogs **Amount \$** \_\_\_\_\_

Please send me more information about the following:

Puppy Sponsorship  Leaving a Legacy

Volunteering  Applying for a Mobility Dog

I enclose my cheque payable to **Mobility Assistance Dogs Trust** or

Please debit my credit card  VISA  Mastercard

Cardholder Name \_\_\_\_\_ Expiry \_\_\_\_\_

Card Number \_\_\_\_\_

Signature \_\_\_\_\_

Date \_\_\_\_\_